



Frodsham Solar

Environmental Statement: Volume 3

Chapter 6 Figures Part 2 of 13

May 2025



PINS Ref: EN010153

Document Ref: EN010153/DR/6.3

**Planning Act 2008; and Infrastructure Planning (Applications:
Prescribed Forms and Procedure) Regulations Regulation 5(2)(a)**

Revision P01

Document Control

Revision	Date	Prepared By	Reviewed / Approved By
P01	May 2025	A Martin	A Russell

© AXIS P.E.D. Ltd 2025. All rights reserved.

This document and its accompanying documents contain information which is confidential and is intended only for the use of the client. If you are not one of the intended recipients any disclosure, copying, distribution or action taken in reliance on the contents of the information is strictly prohibited.

Unless expressly agreed, any reproduction of material from this document must be requested and authorised in writing from AXIS P.E.D. Ltd. Authorised reproduction of material must include all copyright and proprietary notices in the same form and manner as the original and must not be modified in any way. Acknowledgement of the source of the material must also be included in all references.

Prepared For:
Frodsham Solar Ltd

Prepared By:



Well House Barns, Chester Road, Bretton, Chester, CH4 0DH
1st Floor, Barfield House, Alderley Road, Wilmslow, SK9 1PL
Maling Exchange, Studio 307, Hoults Yard, Walker Road, Newcastle Upon Tyne, NE6 2HL

T: 0344 8700 007
enquiries@axis.co.uk
www.axis.co.uk

CONTENTS

Figure 6-6	Viewpoint 1 Existing View
Figure 6-7	Viewpoint 2 Existing View
Figure 6-8i	Viewpoint 3 Existing View
Figure 6-8ii	Viewpoint 3 Existing View
Figure 6-9	Viewpoint 4 Existing View
Figure 6-10	Viewpoint 5 Existing View
Figure 6-11	Viewpoint 6 Existing View
Figure 6-12	Viewpoint 7 Existing View
Figure 6-13	Viewpoint 8 Existing View
Figure 6-14i	Viewpoint 9 Existing View
Figure 6-14ii	Viewpoint 9 Existing View
Figure 6-14iii	Viewpoint 9 Existing View
Figure 6-15	Viewpoint 10 Existing View
Figure 6-16	Viewpoint 11 Existing View
Figure 6-17	Viewpoint 12 Existing View
Figure 6-18	Viewpoint 13 Existing View
Figure 6-19i	Viewpoint 14 Existing View
Figure 6-19ii	Viewpoint 14 Existing View
Figure 6-20	Viewpoint 15 Existing View
Figure 6-21	Viewpoint 16 Existing View

Figure 6-22i	Viewpoint 17 Existing View
Figure 6-22ii	Viewpoint 17 Existing View
Figure 6-22iii	Viewpoint 17 Existing View
Figure 6-22iv	Viewpoint 17 Existing View
Figure 6-23i	Viewpoint 18 Existing View
Figure 6-23ii	Viewpoint 18 Existing View
Figure 6-23iii	Viewpoint 18 Existing View
Figure 6-23iv	Viewpoint 18 Existing View
Figure 6-24	Viewpoint 19 Existing View
Figure 6-25	Viewpoint 20 Existing View
Figure 6-26	Viewpoint 21 Existing View
Figure 6-27	Viewpoint 22 Existing View
Figure 6-28i	Viewpoint 23 Existing View
Figure 6-28ii	Viewpoint 23 Existing View
Figure 6-28iii	Viewpoint 23 Existing View
Figure 6-29	Viewpoint 24 Existing View
Figure 6-30i	Viewpoint 25 Existing View
Figure 6-30ii	Viewpoint 25 Existing View
Figure 6-30iii	Viewpoint 25 Existing View
Figure 6-30iv	Viewpoint 25 Existing View
Figure 6-31	Viewpoint 26 Existing View

Figure 6-32i	Viewpoint 27 Existing View
Figure 6-32ii	Viewpoint 27 Existing View
Figure 6-33i	Viewpoint 28 Existing View
Figure 6-33ii	Viewpoint 28 Existing View
Figure 6-33iii	Viewpoint 28 Existing View
Figure 6-33iv	Viewpoint 28 Existing View
Figure 6-34i	Viewpoint 29 Existing View
Figure 6-34ii	Viewpoint 29 Existing View
Figure 6-34iii	Viewpoint 29 Existing View
Figure 6-34iv	Viewpoint 29 Existing View
Figure 6-35	Viewpoint 30 Existing View



View at a comfortable arm's length
Print on paper at the following size. 841mm width x 297mm height (A1 width x A3 height)

Existing View



Approx. extents of Solar Array Development Area
(largely screened by intervening features)

View at a comfortable arm's length
Print on paper at the following size. 841mm width x 297mm height (A1 width x A3 height)



View at a comfortable arm's length
Print on paper at the following size. 841mm width x 297mm height (A1 width x A3 height)

Existing View



View at a comfortable arm's length
Print on paper at the following size: 841mm width x 297mm height (A1 width x A3 height)

Existing View





View at a comfortable arm's length
Print on paper at the following size. 841mm width x 297mm height (A1 width x A3 height)

Approx. potentially visible extent of Solar Array Development
Area (partially screened by intervening features)



View at a comfortable arm's length
Print on paper at the following size. 841mm width x 297mm height (A1 width x A3 height)

Existing View









View at a comfortable arm's length
Print on paper at the following size. 841mm width x 297mm height (A1 width x A3 height)

Existing View
(looking north-west)



View at a comfortable arm's length
Print on paper at the following size. 841mm width x 297mm height (A1 width x A3 height)

Existing View
(looking north-east)

Visualisation Type:	Type 1	Enlargement Factor:	96%	Camera:	Canon EOS 6D MkII FFS	HFoV:	90°	British National Grid Co-ordinates:	351770,377058	Distance from Order Limits:	920m
Projection:	Cylindrical	Date and Time of Photograph:	22/03/24 10:12	Lens:	Canon EF 50mm 1:1.4	Direction of View:	N-e	Lens elevation (AOD):	134.40m		

Case Reference: EN010153
Document Reference: EN010153/DR/6.1
Regulation 5(2)(a) Infrastructure Planning (Applications: Prescribed Forms and Procedure) Regulations 2009



View at a comfortable arm's length
Print on paper at the following size. 841mm width x 297mm height (A1 width x A3 height)

Visualisation Type:	Type 1	Enlargement Factor:	96%	Camera:	Canon EOS 5D FFS	HFoV:	90°	British National Grid Co-ordinates:	350655,375668	Distance from Order Limits:	1.97km
Projection:	Cylindrical	Date and Time of Photograph:	20/04/23 12:47	Lens:	Canon EF 50mm 1:1.8 II	Direction of View:	N	Lens elevation (AOD):	50.62m		

Case Reference: EN010153
Document Reference: EN010153/DR/6.1
Regulation 5(2)(a) Infrastructure Planning (Applications: Prescribed Forms and Procedure) Regulations 2009



View at a comfortable arm's length
Print on paper at the following size. 841mm width x 297mm height (A1 width x A3 height)

Existing View



View at a comfortable arm's length
Print on paper at the following size. 841mm width x 297mm height (A1 width x A3 height)

Existing View



View at a comfortable arm's length
Print on paper at the following size: 841mm width x 297mm height (A1 width x A3 height)

Existing View





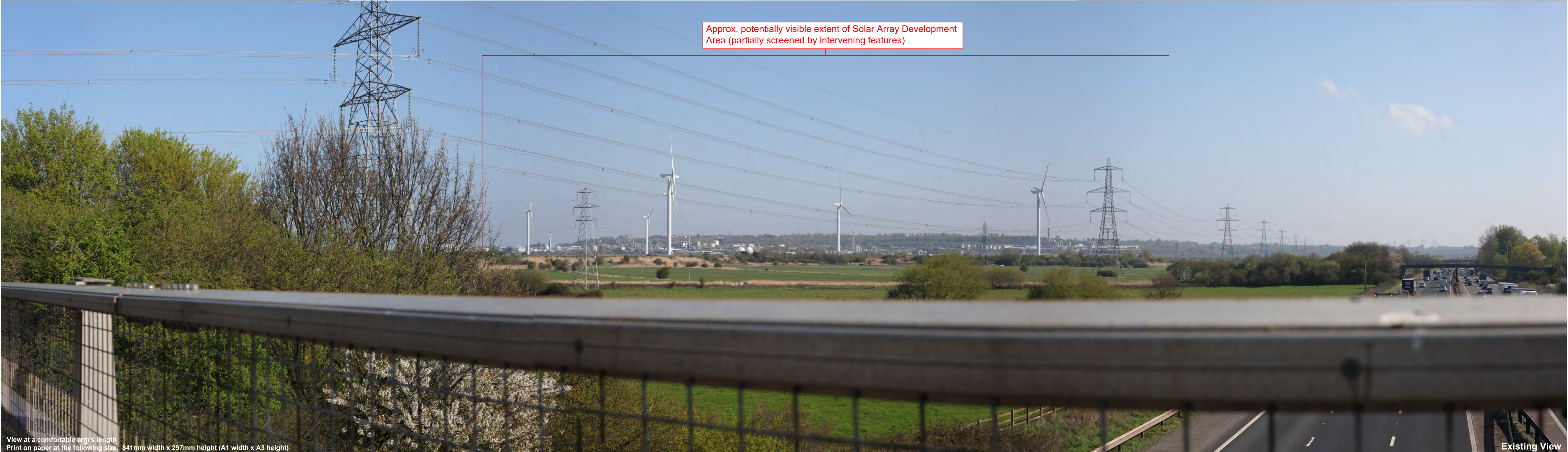
View at a comfortable arm's length
Print on paper at the following size. 841mm width x 297mm height (A1 width x A3 height)

Existing View

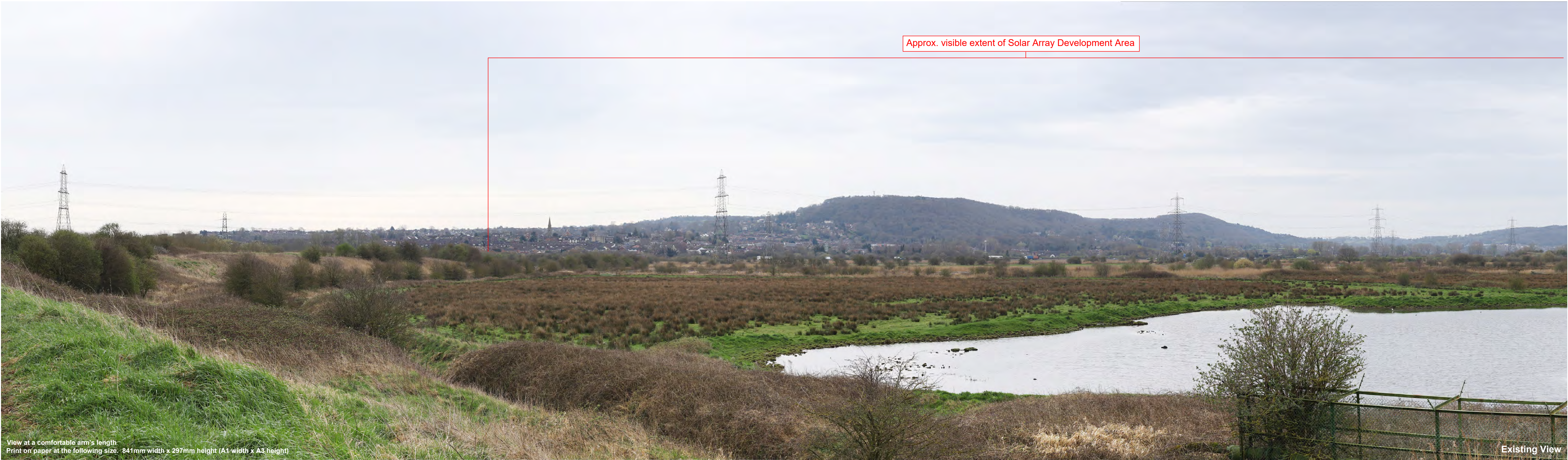


View at a comfortable arm's length
Print on paper at the following size. 841mm width x 297mm height (A1 width x A3 height)

Approx. visible extent of Solar Array Development Area



View at a comfortable arm's length
Print on paper at the following size: 841mm width x 297mm height (A1 width x A3 height)



View at a comfortable arm's length
Print on paper at the following size: 841mm width x 297mm height (A1 width x A3 height)





View at a comfortable arm's length
Print on paper at the following size. 841mm width x 297mm height (A1 width x A3 height)

Existing View



View at a comfortable arm's length
Print on paper at the following size: 841mm width x 420mm height (A1 width x A3 height)

Existing View



View at a comfortable arm's length
Print on paper at the following size. 841mm width x 297mm height (A1 width x A3 height)

Existing View



View at a comfortable arm's length
Print on paper at the following size. 841mm width x 297mm height (A1 width x A3 height)

Existing View





View at a comfortable arm's length
Print on paper at the following size. 841mm width x 297mm height (A1 width x A3 height)

Existing View



View at a comfortable arm's length
Print on paper at the following size. 841mm width x 297mm height (A1 width x A3 height)





View at a comfortable arm's length
Print on paper at the following size. 841mm width x 297mm height (A1 width x A3 height)

Existing View



View at a comfortable arm's length
Print on paper at the following size: 841mm width x 297mm height (A1 width x A3 height)

Existing View

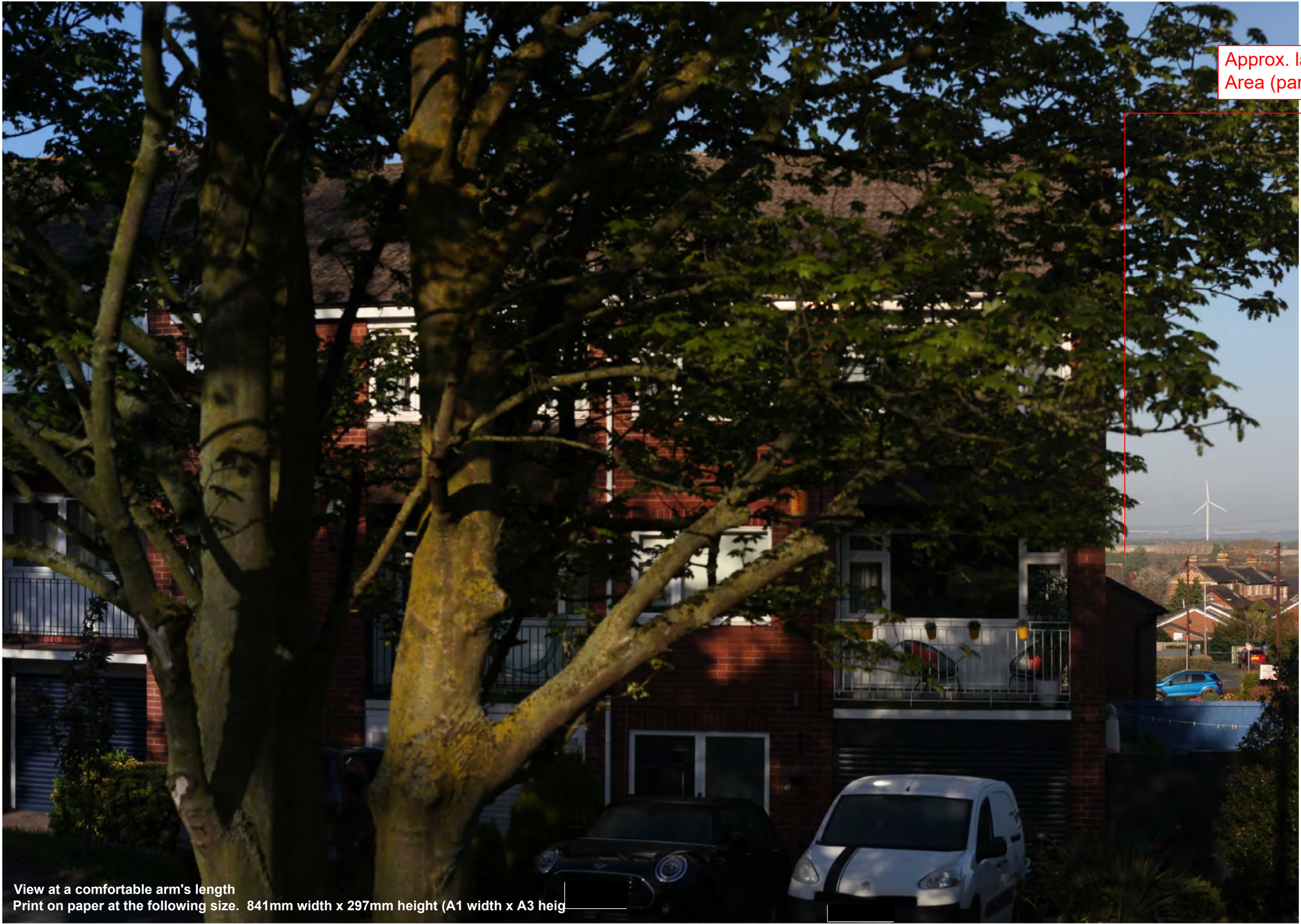


View at a comfortable arm's length
Print on paper at the following size: 841mm width x 297mm height (A1 width x A3 height)

Existing View







Approx. largely visible extent of Solar Array Development Area (partially screened by intervening features)

View at a comfortable arm's length
Print on paper at the following size. 841mm width x 297mm height (A1 width x A3 height)



View at a comfortable arm's length
Print on paper at the following size. 841mm width x 297mm height (A1 width x A3 height)

Existing View



View at a comfortable arm's length
Print on paper at the following size. 841mm width x 297mm height (A1 width x A3 height)

Existing View



View at a comfortable arm's length
Print on paper at the following size. 841mm width x 297mm height (A1 width x A3 height)

Existing View



View at a comfortable arm's length
Print on paper at the following size: 841mm width x 297mm height (A1 width x A3 height)

Existing View



View at a comfortable arm's length
Print on paper at the following size. 841mm width x 297mm height (A1 width x A3 height)

Existing View





View at a comfortable arm's length
Print on paper at the following size. 841mm width x 297mm height (A1 width x A3 height)

Existing View





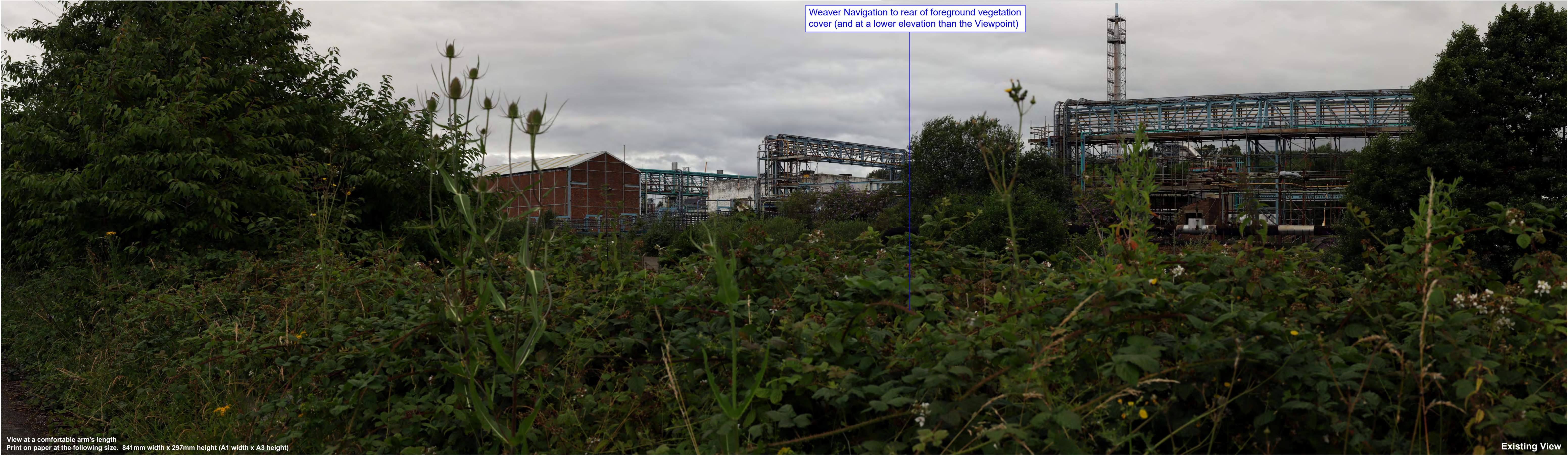


View at a comfortable arm's length
Print on paper at the following size. 841mm width x 297mm height (A1 width x A3 height)

Existing View











View at a comfortable arm's length
Print on paper at the following size. 841mm width x 297mm height (A1 width x A3 height)

